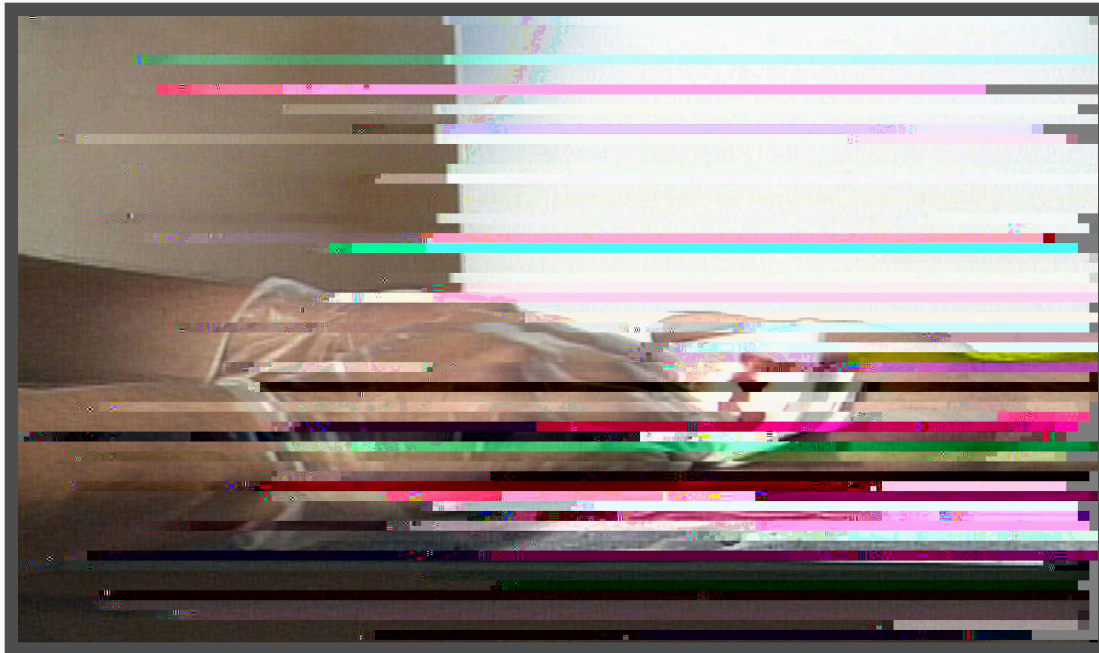


B

Pa





Required by OSHA

Applies to employees in all industries who may be exposed to blood or other potentially infectious materials (OPIM)

T
D

1.2
56,000

S

S
AIDS

á
AIDS

á
2013

á
, á á

á
á á





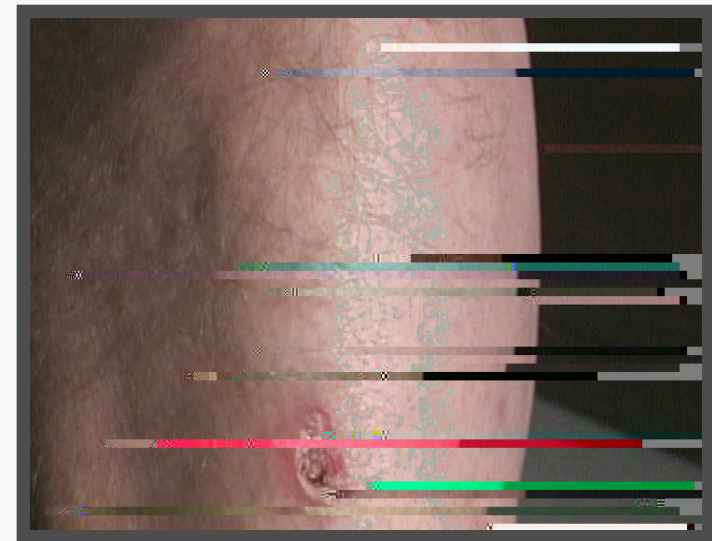
Blood

Human bodily fluids such as:

Punctures caused by sharp objects

Infectious materials contacting open wounds, cuts, or broken or damaged skin

Infectious materials contacting mucous membranes of eyes, nose and mouth

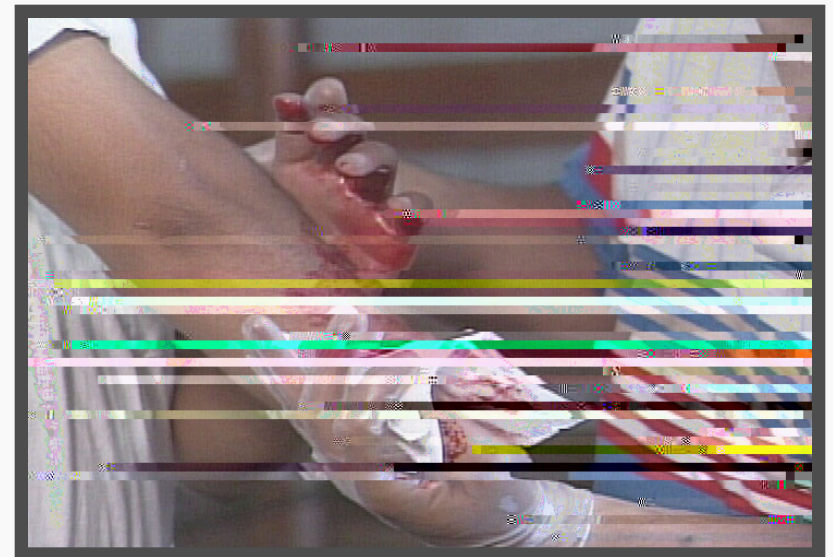


During an accident


While administering
First Aid

During post-accident
clean-up

When performing routine maintenance or
janitorial work





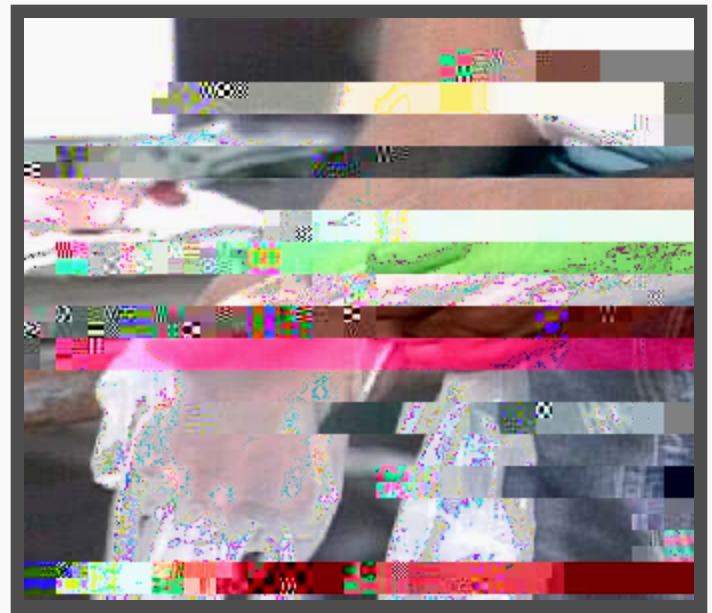


Treat all human blood and bodily fluids as if they are infected with HIV, HBV, HCV and other bloodborne pathogens.



F
L
R
-
-
-

á
:



A U á
P a
E á - á
U PPE
A á a



U PPE & U á P á
C á á á á
P á á
L á á á 10
P á á á á á á
A á - á á

Lá

OPIM

U PPE

Ha á á

P - á á á á

l OPIM

a a

,

ASAP

Contact with skin: a a a a a a a a

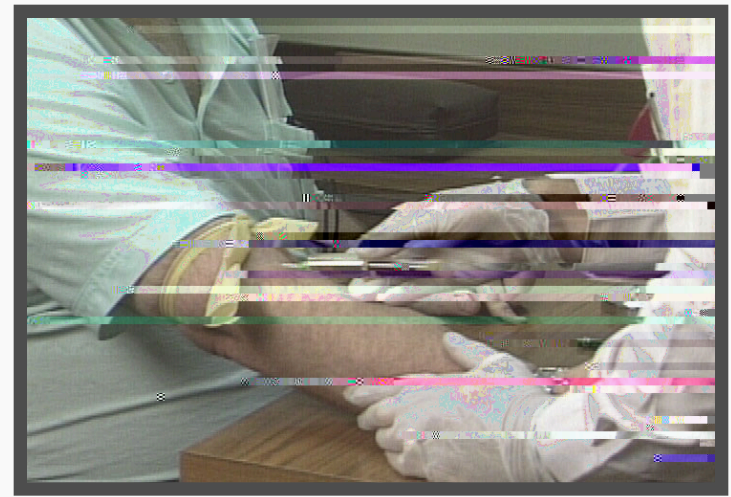
Contact with eyes or mucous membranes:
a a a a a a 15


Contact with clothing:
a a
, a
R a

C - a a a a

-
-
-
-

H a a a





Made available online employees
after the post-incident, unless
employee is a high risk of exposure.

